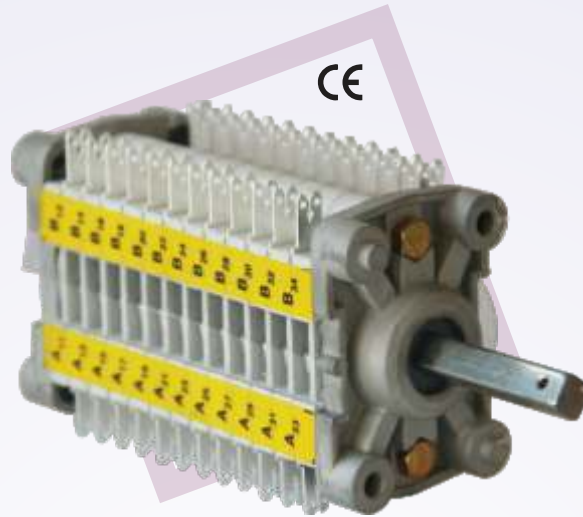




**SHIRKE**  
ELECTRO PVT.LTD.

SWITCH TO **RELIABILITY**



## ROTARY AUXILIARY KNIFE SWITCHES

Rotary auxiliary knife switches popularly known as wafer switches due to their modular & compact designs, they are very versatile for switching a.c. as well as d.c. resistive & inductive loads. They are used as auxiliary contacts in equipments such as MV & HV - Vacuum Circuit Breakers, Gas Circuit Breakers, Isolators & various equipments wherein it is linked mechanically to the equipment and follows the position as per the linkage. In most cases a straight motion of main contacts is converted into rotational motion through links & levers.



Knife type of contacting making it suitable for switching of d.c. loads.

Modular design to achieve any number of poles with minimum components.

Self cleaning of contacts is done during the operation.

Helical coils used in threads to endure more than required torque while mounting.

Flame retardant material to function at high temperatures upto 960°C.

Superior insulating material ensures electrical & mechanical stability.

# ROTARY AUXILIARY KNIFE SWITCHES

## Construction



Wafer switches are generally suitable for 60° and 90° angle of rotational operation. A Stainless steel moulded shaft is beared and supported by aluminum casted strong end shields, performing very well for rotational torques applied externally. Modular packets (wafers) houses two pairs of silver plated brass stationary contacts with a common moving contact bridge made of phosphor bronze. The two blades of phosphor bronze shove over fixed terminal, having inbuilt properties of good wear resistance ensures positive contacting and durability of contact. The wafers are ventilated enough to dissipate heat from the contacts.



## Accessories

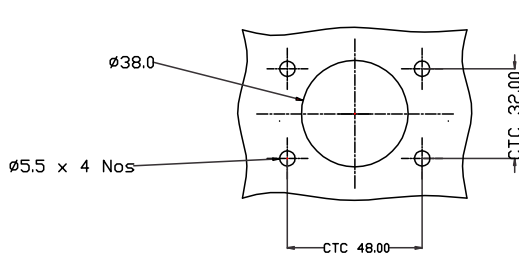
- Lever can be provided along with the switches as per requirement.
- Mounting arrangements can be suitably altered using additional components.
- Indexing mechanism can be attached externally to suit requirements.
- Shaft can be extended on both sides for cascading other compatible devices.

## Specifications

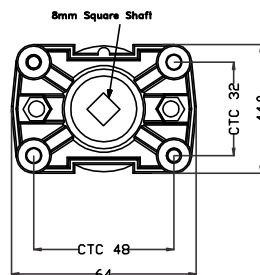
Conventional free air thermal current ( Ith)	10A
Rated operational voltage (Ue)	220 V DC
Rated operational current (Ie) d.c	2A
Short time withstand current (30ms)	100A
Utilization category	DC-13A
Class	I
Switching Capability	Time constant of 20ms (L/R) for inductive load
Dielectric strength	2.5 kV
Rated impulse withstand voltage ( Uimp)	8 kV
Insulation resistance	≥ 500 MΩ
Mechanical life ( Operations)	2,00,000
Electrical life (Operations)	50,000
Conforms to standard IEC-62271 – 100	

DEPTH BEHIND PANEL DIMENSION "A" (IN MM)	
No of Pockets	A
4	69 mm
5	75 mm
6	81 mm
7	87 mm
8	93 mm
9	100 mm
10	107 mm
11	113 mm
12	120 mm

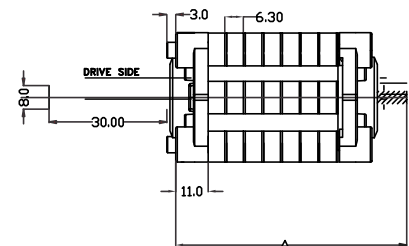
NOTE:-  
AFTER ADDITION OF PER PACKET  
6.3 MM LENGTH IS INCREASING



PANEL CUTOUT



TOP VIEW



SIDE VIEW



**Corporate office & Plant I**  
L-25 MIDC Ambad, Nashik,  
Maharashtra, India, 422010  
Ph.: +91 253 6619372, 2384672

**Plant II**  
W 72A, MIDC, Ambad, Nashik  
Maharashtra, India, 422010  
Ph.: +91 253 6600372

sales@shirkeswitch.net  
www.shirkeswitch.net